

TESS_E²B
the smart energy storage



Thermal Energy Storage Systems

for energy efficient building an integrated solution for residential building energy storage by solar and geothermal resources

Grant agreement number: 680555

Deliverable 1.3 - Project Website (PUBLIC)

TESSe2b DEL 1.3.00/2016

Authors:

Luis Coelho, IPS, Portugal
Amândio Rebola, IPS, Portugal
João Garcia, IPS, Portugal

Participant responsible:

Instituto Politécnico de Setúbal
Final version, 30, March, 2016





Index

1. Introduction	2
2. TESSe2b website	2
3. EMDESK Platform	3

1. Introduction

This document aims to introduce the Deliverable D1.3, Project website, summarizing the main features of the two platforms used in the TESSe2b project, TESSe2b website (for public access) and EMDESK (for project partners). This document allows to understand the differences between the two platforms, and the added value that each represents to the TESSe2b project. The main features of the two platforms will be described, as well as the different information that can be found in each one. The website has been developed to share public information, while EMDESK is a project management tool that only authorized persons have access.

2. TESSe2b website

TESSe2b website represents the main source of information on all project activities and achievements. The website is a public platform where we can find objectives, results, communication, activities, contact and partner's details, and other appropriate information from the TESSe2b project. It will mainly act as a source of information while in parallel ensuring the proper communication among the diverse types of stakeholders.

TESSe2b consortium will prepare, submit and publish the findings in TES systems, thermofluid analysis, optimization methods, smart control systems, thin film coatings and nanotechnology in order to present, deliberate and discuss project related matters and findings and share the achievements with the scientific and industrial community. These publications will be published in parallel in the TESSe2b website. Flyers, brochures, newsletters and posters used for disseminating the project will also be published in the website.

In the home page we can find information about the project, news, a calendar and an area to contact the project coordinator. The different contents of the site are divided into six menus that allows access to all the existing information.

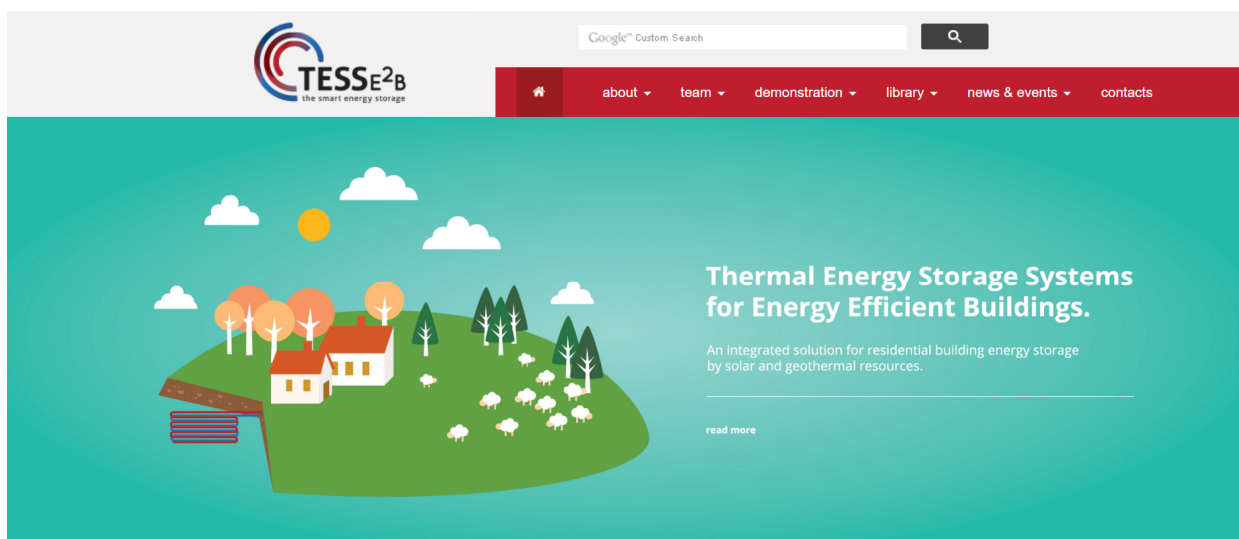


Figure 1 – TESSe2b website home page

The website will be maintained for at least one year after the end of the project and its existence will be widely spread to all relevant stakeholders. To evaluate the accessibility and the acceptability of the stakeholders, a web traffic analysis tool will be utilized as an activity and quality indicator that will track the number of visitors and analyzes quantitative and qualitative metrics.

The link of the website is the following: www.tesse2b.eu

3. EMDESK Platform

EMDESK is a Project management platform specially developed for European research projects. This platform facilitates the communication and collaboration among the project partners so every partner can get easily involved. This features allow a strengthened project commitment and increased understanding and transparency. For each partner the project coordinator can define leads, allocate person-months on tasks or configure individual financial settings. There are platforms of internal emails and forums facilitating the communication among the partners. EMDESK has also a tool for managing all documents produced inside the consortium, allowing any time, each partner has access to any document of the project.

EMDESK is a password-protected tool that only allows access to project partners, in order to share documents, intermediate results, and other information. EMDESK will mainly act as a private information exchange tool while in parallel ensuring the proper communication among all partners.

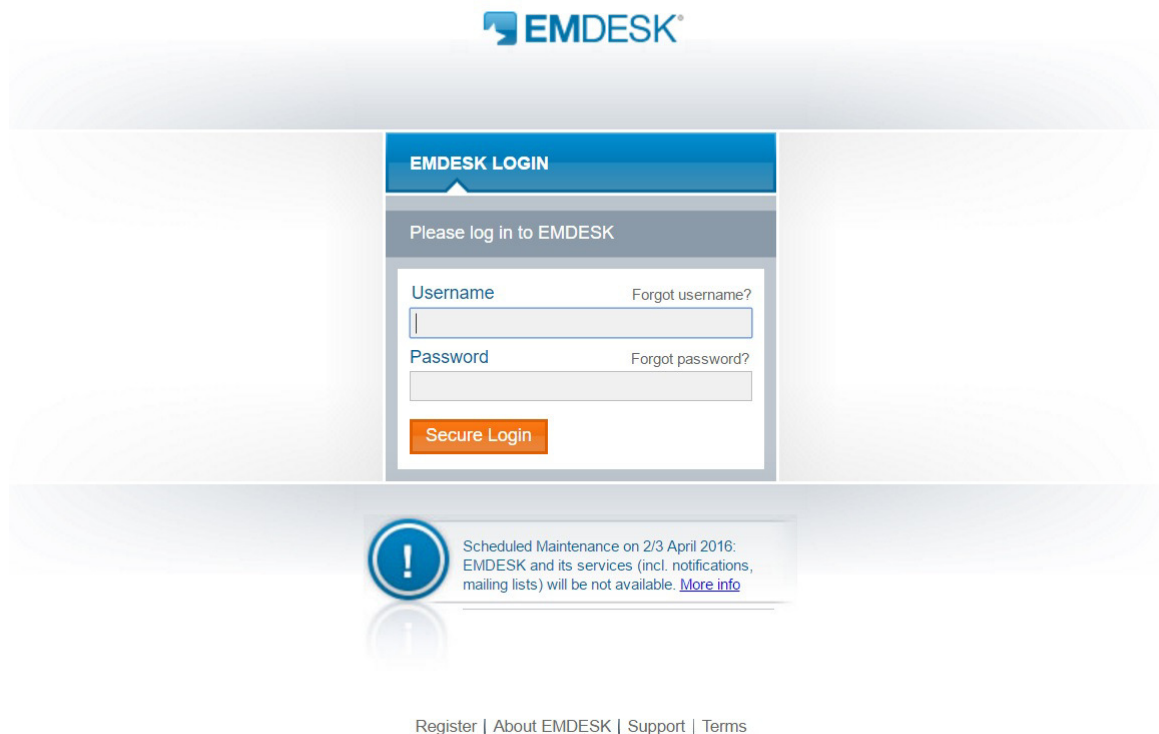


Figure 2 – EMDESK log in page

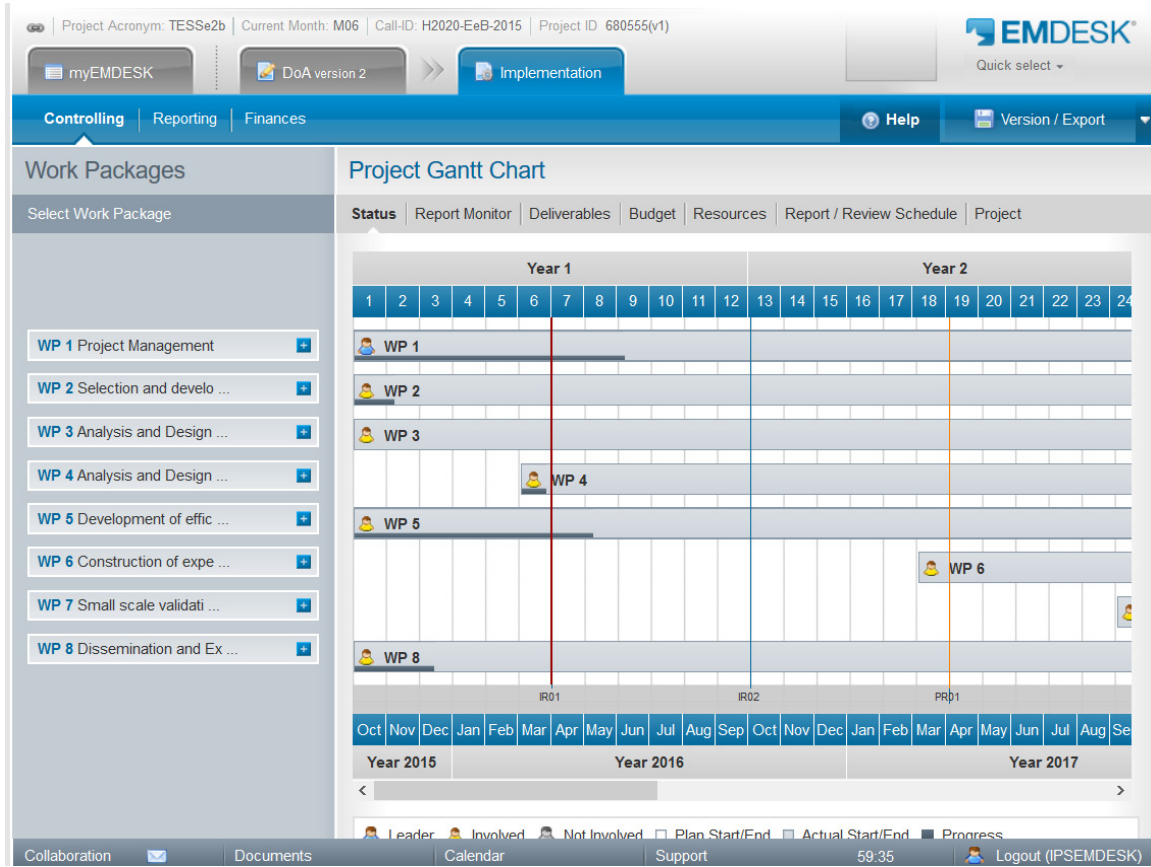


Figure 3 – EMDESK controlling project page